

Thermal cut-out thermostat
Automatic or manual reset

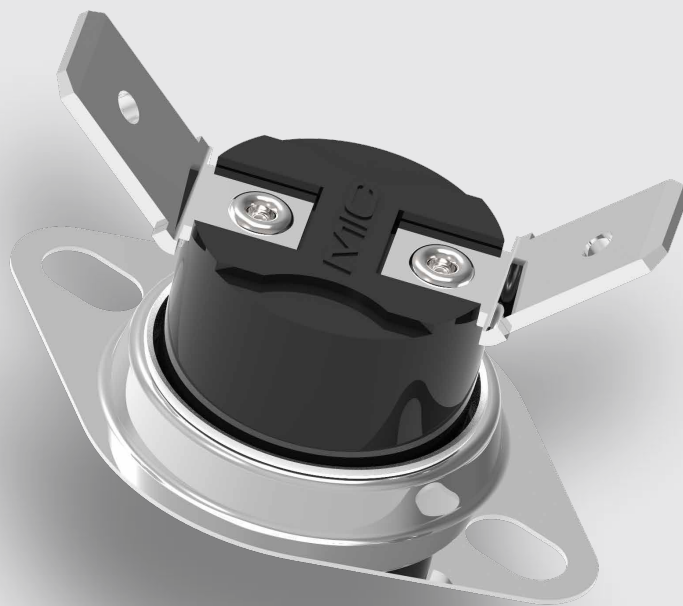
R

25

26

35

36



Applications

- Cooking devices
- Electric grill
- Heaters and heating Elements
- Antifreeze
- Diesel preheating (automobile)

Benefits

- High current and high temperatures
- Low tolerances up to $\pm 3K$
- various attachments
- Low hysteresis up to 10K
- Up to 100,000 circuits

Description

Switches of the **R series** are extremely robust switches with universal characteristics: they can be used as temperature monitors and controllers, current-capable up to 16 A, specifically adjustable hysteresis and low tolerances up to $\pm 3\text{K}$.




The plastic housing, the floor and the fastening are tension-free. The heat is applied directly to the thermo-bimetallic snap-disc via the contact surface (bottom), and thus allows a very rapid reaction. The connections vary in dimensions and mounting angles (0 - 90°).

Types R25 and R26 are automatically resetting, whereas types R35 and R36 are manual-resetting switches.

Delivery quantities from 2,000 pcs.



Technical data

| ratings | | type | | | | |
|--------------------------------------|---|---|---------------|---|----------------|-----|
| | | R25A | R26A | R35A | R36A | |
| reset | | automatic | | manual | | |
| contact version | | normally closed | | | | |
| VDE | rated current at 250V AC | 10 A | 16 A | 16 A | 16 A | |
| | switching cycles | 100,000 | 30,000 | 10,000 | 10,000 | |
| | max. temperature range T_A (steps in 5 K) ¹⁾ | 0°C ... 150°C | 0°C ... 210°C | 45°C ... 150°C | 45°C ... 180°C | |
| UL | rated current at 250V AC | 16 A | 10 A | 10 A | 10 A | |
| | switching cycles | 6,000 | 100,000 | 6,000 | 6,000 | |
| | max. temperature range T_A (steps in 5 K) | 0°C ... 160°C | 0°C ... 230°C | 45°C ... 150°C | 45°C ... 180°C | |
| tolerance | | $\pm 3\text{K}$ (< 130°C) $\pm 5\text{K}$ (< 210°C) | | $\pm 3\text{K}$ (45°C ... 95°C) $\pm 4\text{K}$ (96°C ... 150°C) | | |
| feature of automatic action | | 1.C | | 2.B | 1.B | |
| contact resistance | | < 30 mΩ | | | | |
| hysteresis | | 0°C ... 130°C 10K 131°C ... 159°C 15K 160°C ... 190°C 15K 191°C ... 230°C 15K | | 10K $\pm 5\text{K}$ 15K $\pm 5\text{K}$ 15K $\pm 7\text{K}$ 15K $\pm 10\text{K}$ | | --- |
| suitable for use in protection class | | I, II | | | | |
| approvals ²⁾ | VDE |  EN60730-1 / -2-9 | | | | |
| | UL |  UL60730-1, UL60730-2-9, UL873, CAN/CSA-E60730-1, CAN/CSA-E730-2-2 / -2-9 | | | | |
| | CQC |  GB14536.1 / GB14536.10 | | | | |

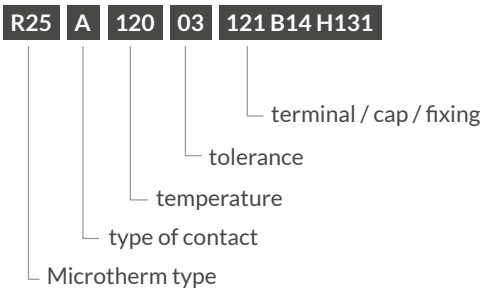
¹⁾ Weitere Nenntemperaturun auf Anfrage möglich ²⁾ Deviations possible for individual designs

Versions

| code | illustration | drawing dimension (mm) | technical description |
|----------------------|--------------|--------------------------|---|
| R25A 121 B14 H131 | | | terminals 6.3 x 0.8 mm, aluminium cap, standard bracket (loose) |
| R25A 121 B14 H221 | | | terminals 6.3 x 0.8 mm, aluminium cap, standard bracket (loose) |
| R26A 121 B14 H131 | | | ceramic switch, terminals 6.3 x 0.8 mm, aluminium cap, standard bracket (loose) |
| R25A 121 A211 | | | terminals 6.3 x 0.8 mm, fixed, raised bracket in aluminium, fixed at ±30° resp. ±45° |
| R25A 321 D43 | | | terminals 4.8 x 0.8 mm, screwed connections M4 x 5.5 mm, brass |
| R25A 111 B14 H131 | | | bent terminals 6.3 x 0.8 mm, aluminium cap, standard bracket (loose) |
| R35A 121 B34 | | | manual reset, terminals 6.3 x 0.8 mm, steel cup for low temperatures |
| R35A 321 A211 | | | manual reset, terminals 4.8 x 0.8 mm, fixed, raised bracket in aluminium, fixed at ±30° resp. ±45° |
| R35A 111 B14 H131 | | | manual reset, bent terminals 6.3 x 0.8 mm, aluminium cap, standard bracket (loose) |
| R36A 121 B14 H131 | | | manual reset, ceramic housing, terminals 6.3 x 0.8 mm, aluminium cap, standard bracket (loose) |

Please contact us for the combination of various executions with regard to terminals and fixations.

Ordering example



Marking

R25A type R25 normally closed (UL, CQC, VDE)

12005 response temperature (120°C),
tolerance ($\pm 5K$)

036 date of manufacture (May 2016)

or:

R25A type R25 normally closed (VDE, UL, CQC)

--123 drawing number (range 001 to 999)

036 date of manufacture (June 2016)

Microtherm Sentronic GmbH

Unterer Hardweg 9
75181 Pforzheim
Deutschland
Tel.: +49 7231 787-0
Fax: +49 7231 787-155
info@microtherm.de
www.microtherm.de



MICROTHERM
sentronic